

49/66

DRAWING NUMBER

DRAWING NUMBER

DRAWING NUMBER

PLAN HOLD CORPORATION • IRVINE, CALIFORNIA
RECORDED BY NUMBER 0784

BOCA WOODS COUNTRY CLUB PLAT 4 P.B. 48, PGS. 16-25

BOCA WOODS COUNTRY CLUB PLAT 6

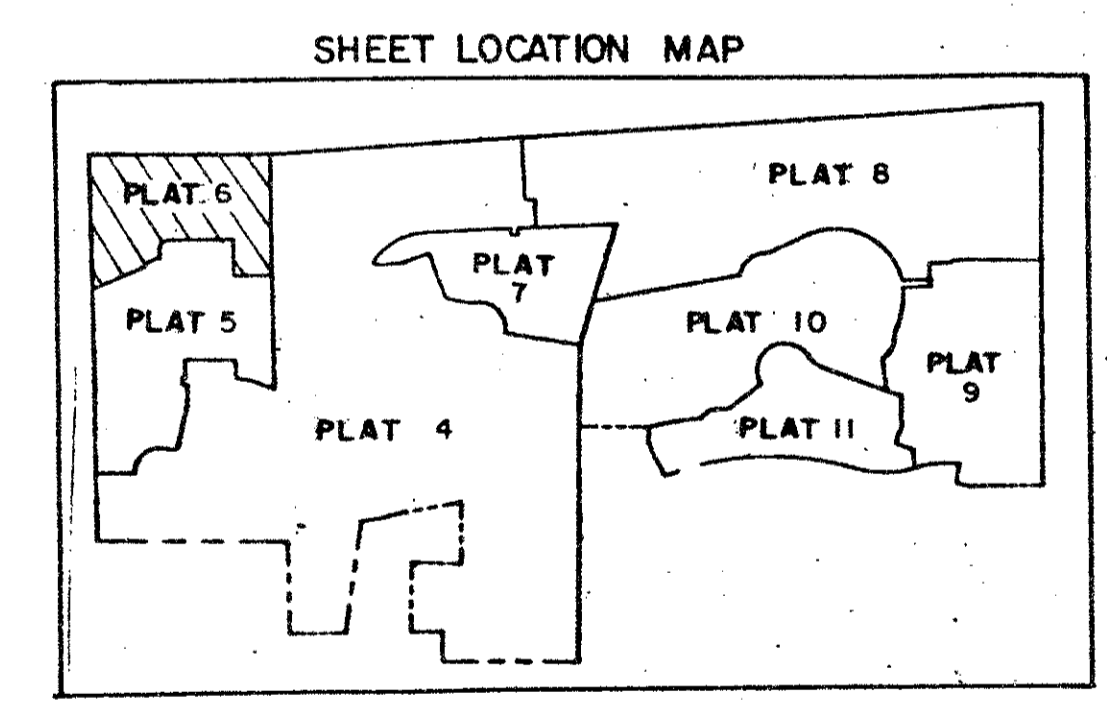
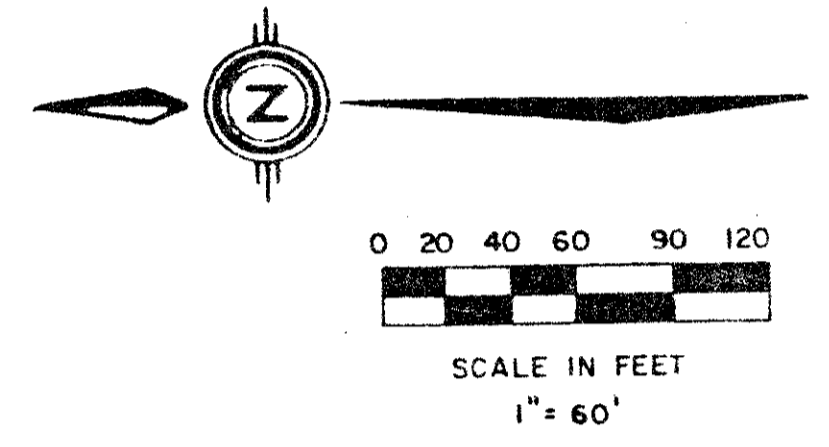
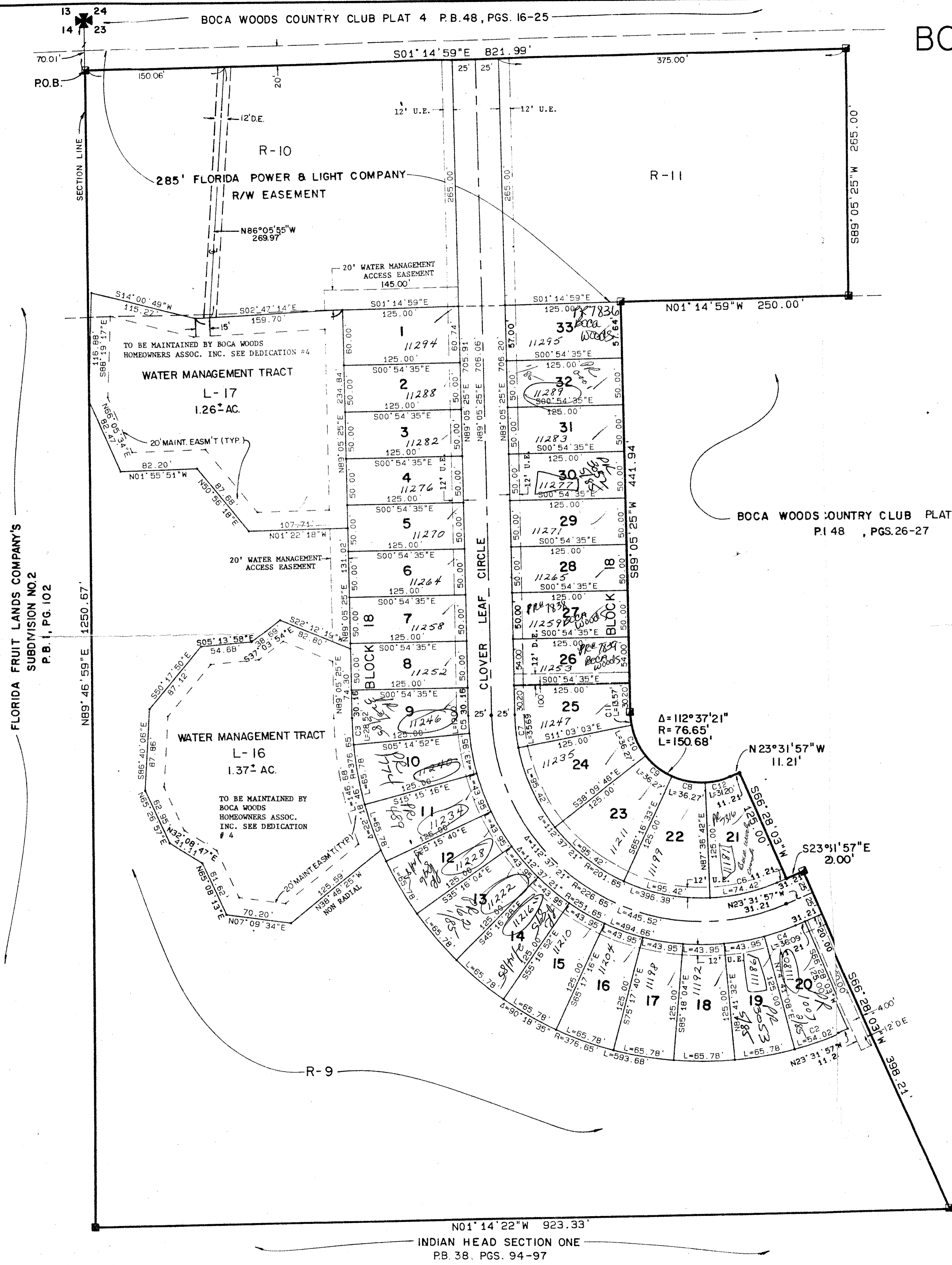
A PART OF BOCA WOODS COUNTRY CLUB, A P.U.D.

SITUATE IN SECTION 23, TOWNSHIP 47 SOUTH, RANGE 41 EAST,
PALM BEACH COUNTY, FLORIDA, BEING A REPLAT OF A PORTION OF
FLORIDA FRUIT LANDS COMPANY'S SUBDIVISION NO. 2,
AS RECORDED IN PLAT BOOK 1, PAGE 102.

SHEET 2 OF 2

STATE OF FLORIDA
COUNTY OF PALM BEACH
THIS PLAT WAS FILED FOR
RECORD AT _____ DAY OF _____
AD. 1984 AND DULY RECORDED
IN PLAT BOOK _____ ON PAGES
AND _____
JOHN B. DUNKLE, CLERK
CIRCUIT COURT
BY: _____, D.C.

49/66



NO.	DELTA	RADIUS	LENGTH
C1	142°37'21"	76.65	150.68
C2	8°13'04"	376.65	54.02
C3	4°20'17"	376.65	28.52
C4	8°13'04"	251.65	36.09
C5	4°20'17"	251.65	19.05
C6	21°08'38"	201.65	74.42
C7	10°08'28"	201.65	35.58
C8	27°06'45"	76.65	36.27
C9	27°06'45"	76.65	36.27
C10	27°06'45"	76.65	36.27
C11	10°08'28"	76.65	13.57
C12	21°08'38"	76.65	28.29

215-305

Quad #69
INSP #
ID

49
6566
REPAID
BOCA Woods Country Club
go 1/6/81

49/66

Meridian
Surveying and mapping inc
WEST PALM BEACH, FLORIDA

DRAWN	DATE
MEH.	JAN. 1984
CHECKED	SCALE
RA.H.	1" = 60'
DRAWING NO.	
	82-P-051

BOCA WOODS COUNTRY CLUB
PLAT 6